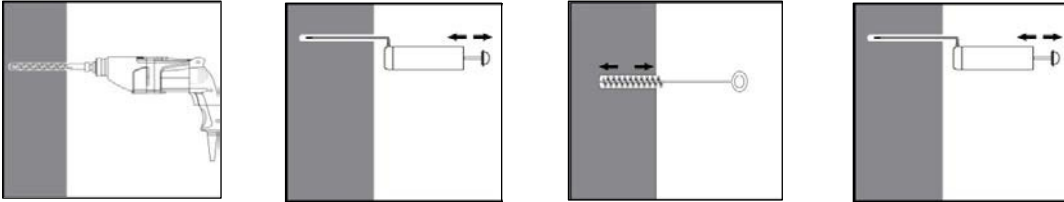


CHEMIRE'S POLYESTER CHEMICAL ANCHOR

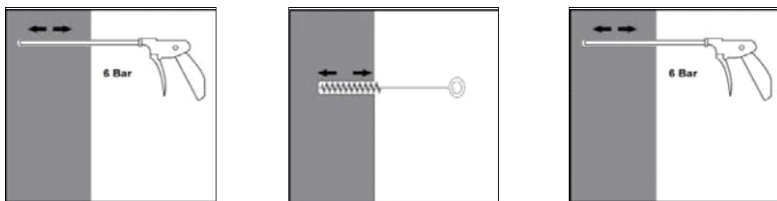
APPLICATION INSTRUCTIONS

1° Drill a hole in the surface with the required depth using the appropriately sized drill bit. Clean the hole just before setting the anchor. The hole must be free of dust and debris.



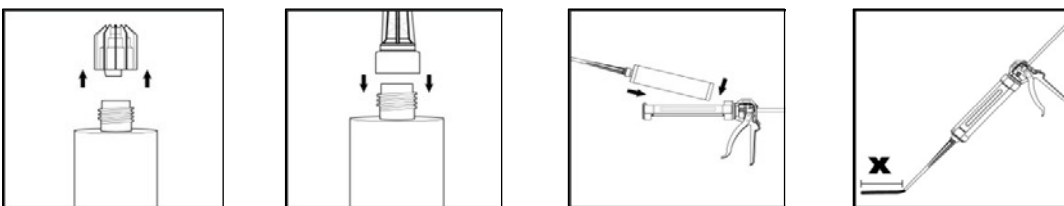
2° The air blow gun shall be used for blowing out holes up to diameters $\leq 24\text{mm}$ and depths up to $h_{ef} \leq 10d$. Blow out at least 4 times from the back of the hole, using an extension if needed. Brush 4 times with the specified brush size (see Table 6 at Product Data Sheet).

3° Insert the steel brush on the hole (if needed with an extension) in a twisting motion and remove it. Blow out again at least 4 times.

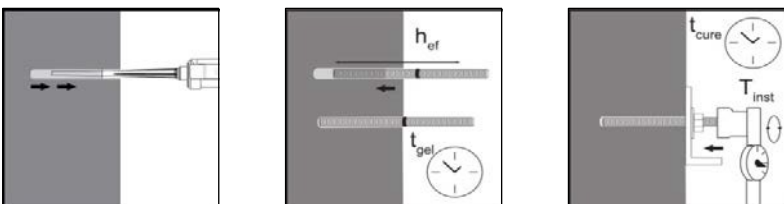


4° Clean with compressed air all hole diameters and depths.

5° Blow 2 times from the back of the hole (if needed with a nozzle extension) over the whole length with oil-free compressed air (min. 6 bar at $6\text{ m}^3/\text{h}$). Brush 2 times with the specified brush size (see Table 6 at Product Data Sheet). Insert the steel brush on the back of the hole (if needed with an extension) in a twisting motion and remove it. Blow out again with compressed air at least 2 times.



6° Remove the cap from the cartridge. Tightly attach the mixing nozzle. Do not modify the mixer in any way. Make sure that the mixing element is inside the mixer. Use only the supplied mixer. Insert the cartridge into the dispenser gun. Discard the initial resin samples. Discard the first 10ml of resin.



7° Inject the resin starting at the back of the hole, remove slowly the mixer while pulling the trigger. Fill holes approximately $2/3$, to ensure that the gap between the anchor and the concrete is completely filled with resin along the depth.

8° Before use, verify if the threaded rod is dry and free of contaminants. Install the threaded rod to the required depth, according to the application and cure times (see Table 7 at Product Data Sheet). The applied torque shall not exceed the values T_{max} given in the Table 1 at Product Data Sheet.